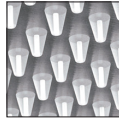
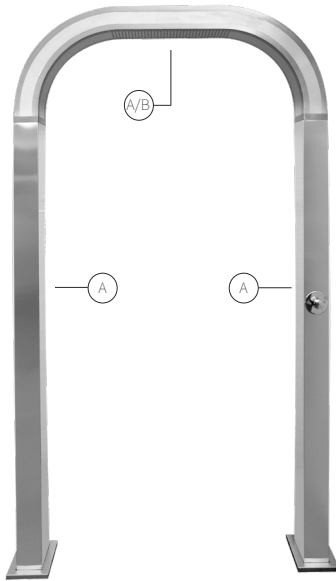




OPTION A



OPTION B

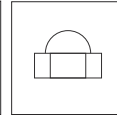


Curved bridge shower in stainless steel
AISI 316L (Marine quality). Satin finish.

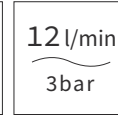
**Option shower with photocell (ref. 119CF)*



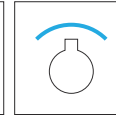
Support
inclus



Nuts
inclus



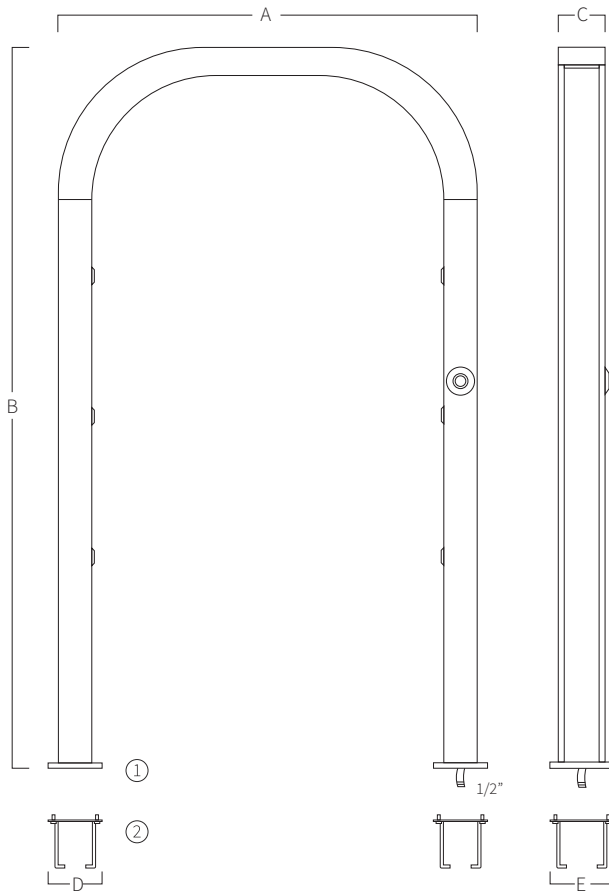
12 l/min
3bar



Tap (A)



Earth
connection



A	B	C	D	E
1190	2050	130	150	175
46,86	80,71	05,12	05,91	06,89
Measure in mm Measure in inch				

- ① Trim.
- ② 2 supports to embed at ground level.

MOUNTING SYSTEM

- 1) The platen has to be at the ground level.
- 2) Fix the earth connection to the supports.
- 3) The central opening is for the water connection with 1/2" female fitting.
- 4) Fix the shower bridge with screws (included).